



MEMBER OF
TGGROUP

TMV-510T+APC

Tapping Center



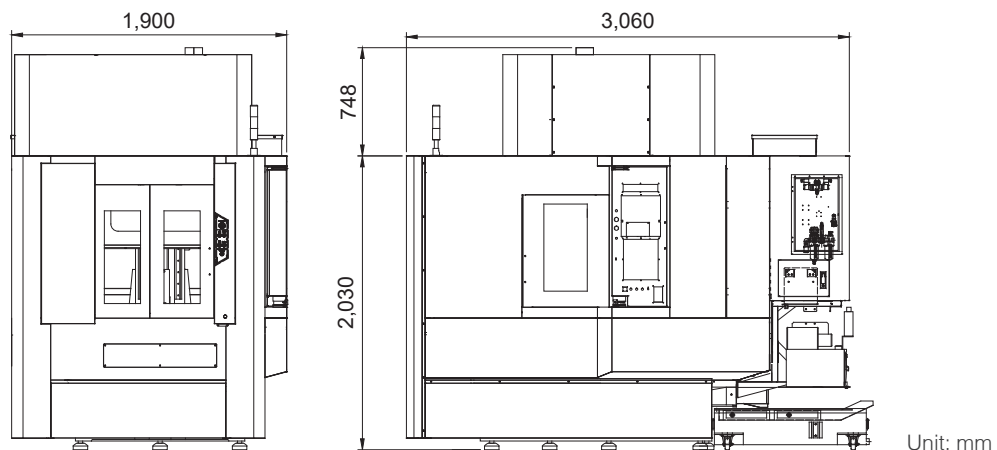
Tongtai Machine & Tool Co., Ltd.
www.tongtai.com.tw

APC

- Column moving design and APC table can highly upgrade production efficiency.
- APC with hydraulic unit available for fixture clamping & unclamping.
- Pallet Changing Time 0-180°=5 sec.



Machine dimensions



Specification

Item	Specification	Unit	TMV-510T+APC
Table	Table size	mm	600x360
	Max. loading capacity	kg	100x2
	Table height from floor	mm	920
	T-slot (size×No.)	mm	18x3
Spindle	Spindle taper		7/24 Taper No.30
	Spindle speed	rpm	8,000 (4,000) (12,000)
Travel	X/Y/Z axis travel	mm	510/360/435
	Distance from table surface to spindle gage line	mm	200~635
Feed	X/Y/Z axis rapid traverse	m/min	40/40/48
	Cutting feedrate	mm/min	1~10,000
ATC	Tool shank	m/min	BT-30
	Tool capacity	pc	20
	Max. tool diameter	mm	Ø68
	Max. tool diameter(w/o adjacent tool)	mm	Ø100
	Max. tool length	mm	200
Motor	Max. tool weight	kg	3
	Spindle motor	kW	5.5/3.7
	X/Y/Z axis servo motor	kW	1.6/1.6/1.6
Machine size	Width×depth×height	mm	1,900x3,060x2,450
	Weight	kg	4,300
Controller			Fanuc 0i-MF

©All Specifications are subject to change without notice. All Specifications are subject to change based on the final quotation or contract.